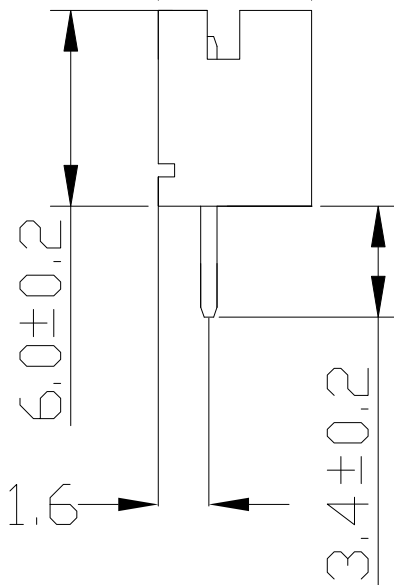
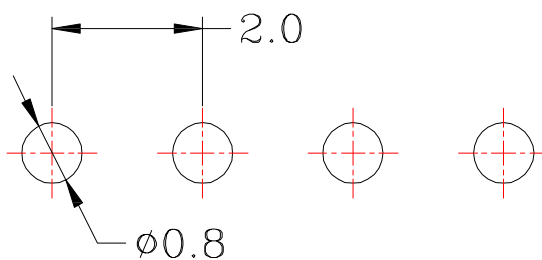
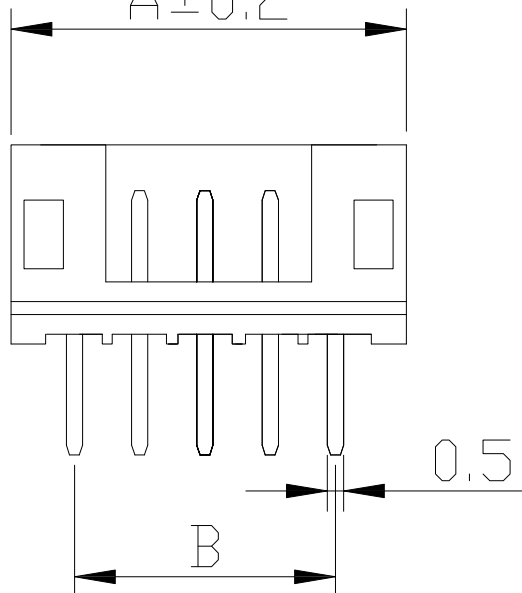


4.7 ± 0.2



A ± 0.2



P.C.B LAYOUT MOUNTING PATTERN

POLES	DIMENSIONS(mm)	
	A	B
2	6.0	2.0
3	8.0	4.0
4	10.0	6.0
5	12.0	8.0
6	14.0	10.0
7	16.0	12.0
8	18.0	14.0
9	20.0	16.0
10	22.0	18.0
11	24.0	20.0
12	26.0	22.0
13	28.0	24.0
14	30.0	26.0
15	32.0	28.0
16	34.0	30.0

SPECIFICATIONS

Current rating : 2.0A AC , DC

Voltage rating : 250V AC , DC

Temperature rating : -25°C ~ +85°C

Insulation resistance : 1000MΩ min.

Withstand voltage : 800V AC/minute

Contact resistance : 10mΩ/Max

Material:

Housing : PA66

Contact : Brass,Tin over Nickel

ITEM NO.	DESCRIPTION	DRAWN	DATE
2	新增尺寸	Jack	081720
1	更新圖面	Jack	020218

東莞市高迪電子有限公司
DONG GUAN GAO DI ELECTRONICS CO., LTD

TOLERANCE UNLESS OTHERWISE STATED:

Up to 5 ±0.2
Above 5 ~ 15 ±0.3
Above 15 ~ 30 ±0.4
Above 30 ~ 50 ±0.5
Angle ±0.3°

3RD. ANGEL'S



UNITS

MM

DRAWN BY:	DATE	MATL	TITLE	CONNECTOR
Jack Lu	08/17/20		MODLE	WAFER P : 2.0mm DIP 180度
CHECKED BY:	DATE	FINISH	DWG NO.	WF-2001VDxx-S304
Jacky Chen	08/17/20		SCALE	1 : 1
APPROVED BY:	DATE	SHEET NO.	PART NO.	WF-2001VDxx-S304
Tony Kao	08/17/20	1 of 1		

SIZE
A4
VER
R2